



# IN-HALL UNITS inLIKO®

---

Designed in **Europe**.  
Made in **India**.

Designed in **Europe.**  
Made in **India.**



**To be at the very top, to be the best in our field and to provide our customers with the best possible services.**

„Through this strategy and through the rigorous demands we set on ourselves, we are able to create new sources of development and growth. Our work is our passion and we enjoy it. We value quality work and reward quality people.“

Libor Musil  
Chairman of the board





Efficient and flexible



Optimal space for a company's operating needs



ABB



Škoda Transportation

# OUR SATISFIED CUSTOMERS



Installation without production or storage restrictions

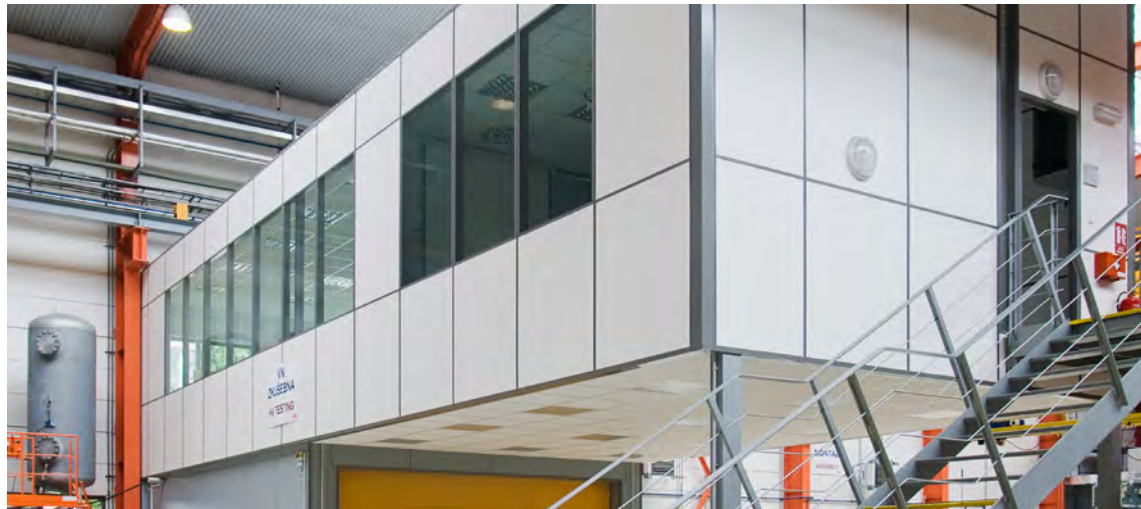


KIA



Philip Morris

Fast and clean



AUDI supplier MAN HUMMEL



BOSCH DIESEL





## NEW SPACE

### ADVANTAGES OF inLIKO® INHALL UNITS IN INDUSTRIAL BUILDINGS:

- very easy, fast and clean assembly with no operating restrictions
- easy dissassembly and relocation
- combination of solid or glazed modules
- a wide selection of surface treatment
- special acoustic solutions
- supplementary equipment

The quality of inLIKO® inhall units meets the highest demands in design, variability and practical use





# BE INSPIRED

## DESIGN AND FUNCTIONALITY IN EVERY DETAIL OF inLIKO® SYSTEMS

### Aluminum profiles:

- powder coated (as per RAL range)
- anodised

### Infills:

- plasterboard covered with vinyl wallpaper (wide choice from LIKO-S sampler)
- chipboard with laminated surface or natural veneer
- glazed modules with blinds or smart glass

### Door

- solid or glazed
- door construction – wooden door structure or aluminum frame

### Supporting steel structure

- light-weight load bearing structure
- anticorrosive surface treatment
- coated visible parts of structure (as per RAL range)







## FOR CLEAN ROOMS OR SPACES WITH SPECIAL ENVIRONMENT

- layout planning of inhall units according to your company's operating needs
- a selection of the most suitable combinations, with respect to aesthetics, sound insulation, static analysis and fire resistance
- supplementary equipment
- after-sale service – change layout without disturbing your company's normal operations

LIKO-S, a.s., is a holder of the ISO 9001 quality control system certificate







# DEMOUNTABLE PARTITIONS

## QUICKLY SEPARATE HALLS

- simple to demount and relocate
- multiple uses of materials possible
- combination of glazed and solid modules
- wide surface selection
- fast and functional separation of production from administrative or storage spaces
- acoustic separation from production spaces
- separation of clean spaces or spaces with special environment
- new rooms without losing your space







## inLIKO®

- variable interior system for inhall units
- very simple and clean assembly without production restrictions
- facilities which you currently need
- fast and clean solution



Single floor inhall unit



Elevated inhall unit



Two floor inhall unit



# How to specify, fully and correctly, the demands on a inhall unit

IF YOU ARE CONSIDERING USING AN INHALL UNIT, IT IS NECESSARY TO SPECIFY YOUR DEMANDS EXACTLY. WE ARE HAPPY TO PROVIDE ADVICE.

## 1. SHAPE OF THE INHALL UNIT

- A free standing inhall unit – will have four walls
- An inhall unit added into the original wall – will have three walls
- A corner built inhall unit will have only two walls

## 2. NUMBER OF FLOORS

- Single floor inhall unit
- Two floor inhall unit
- Multi-story inhall unit
- Dimensions of the inhall unit: Lenght × width × height in mm

CORNER WALL MOUNTED



SELF STANDING



WALL MOUNTED, "U" SHAPED



## 3. STRUCTURE OF THE INHALL UNITS CLADDING

### Solid walls are possible as follows:

- Plasterboard with DURAFORT vinyl wall covering, as per the manufacturer's pattern book
- Plasterboard with Polyrey surface as per the manufacturer's pattern book
- Laminated chipboard, as per the manufacturer's pattern book
- Sheet metal put on chipboard in RAL colour, or natural aluminum
- Special surface treatment, such as laminated fiberboard, OSB board...

### Glazed walls with double safety glass:

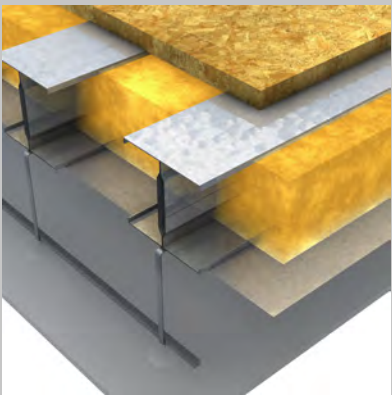
- Fully glazed walls, divided by a horizontal transom at the door height
- Solid to window sill, glazed to the height of the door, glazed or solid overpanel
- Glazed fanlight from door height
- In all glazed modules, blinds can be inserted between the glass sheets
- Door wings in designs mentioned above
- Special requirements according to the wish of the client, e.g. sliding door, door with automatic drive, rollable gate etc.

### Floor types:

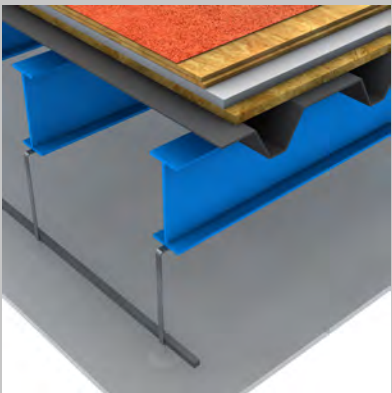
- Non load bearing floor – ceiling only, possible with thermal insulation
- Load-bearing floor – load-bearing capacity for 1 person for cleaning and maintenance
- Floor's load-bearing capacity 250 kg/m². Load-bearing capacity required for normal office operation
- Impact sound insulation included
- Special requirements of the client

## CEILING TYPES

NON-WALKABLE SOLUTION



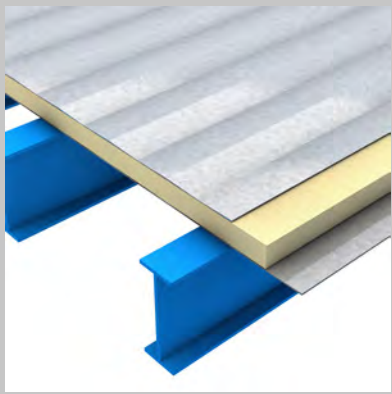
WALKABLE FLOOR SOLUTION



WALKABLE CEILING SOLUTION

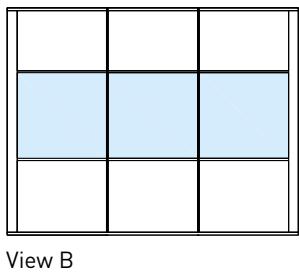
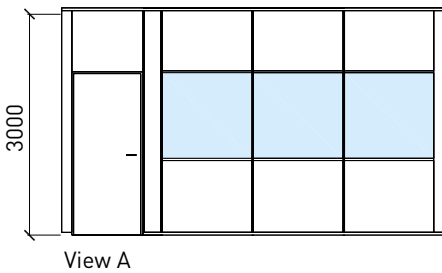
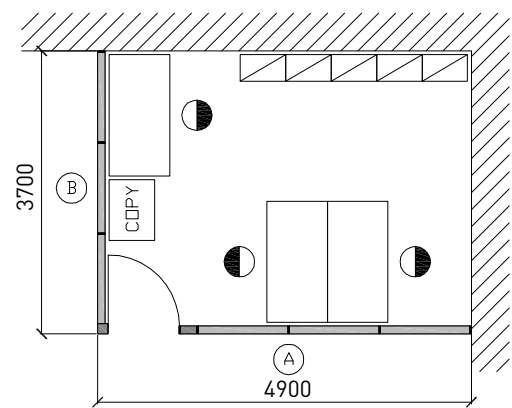


WALKABLE CEILING SOLUTION

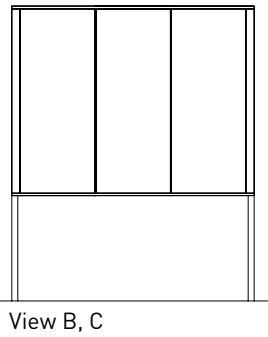
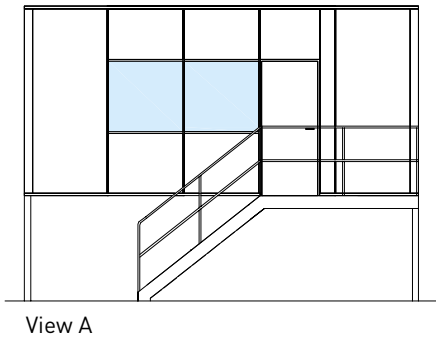
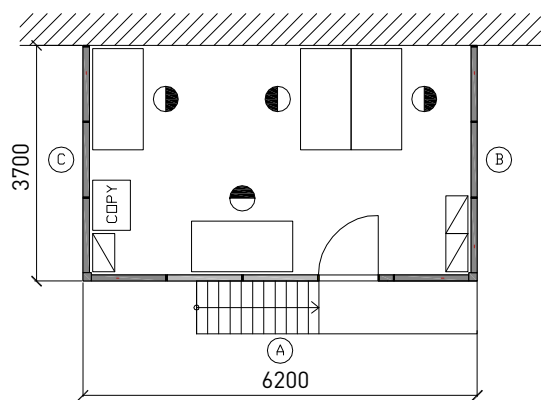


# inLiko® – a guide to inhall units

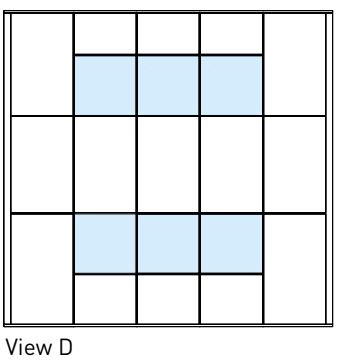
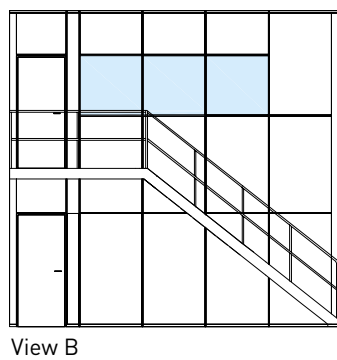
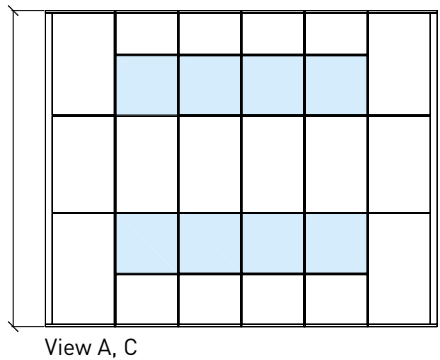
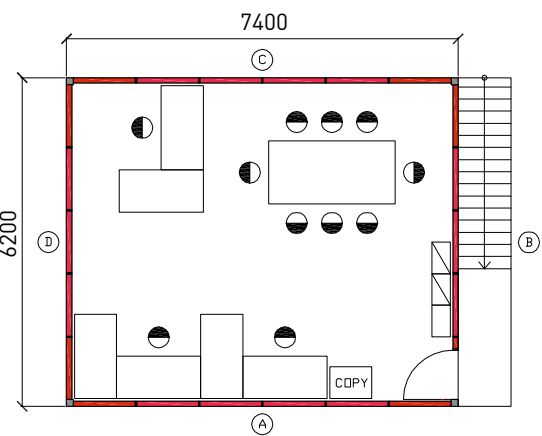
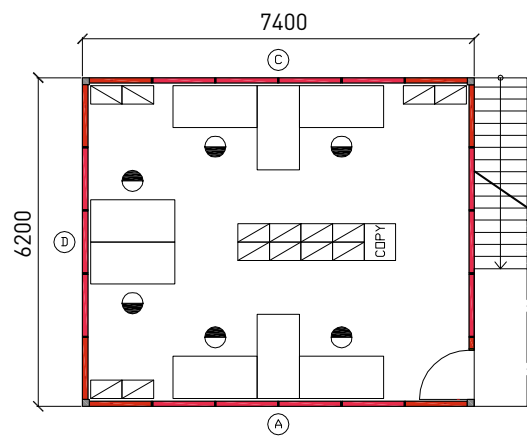
## Single floor corner unit – 4,9 × 3,7 m



## Elevated unit – 6,2 × 3,7 m



## Two floor detached unit – 7,4 × 6,2 m

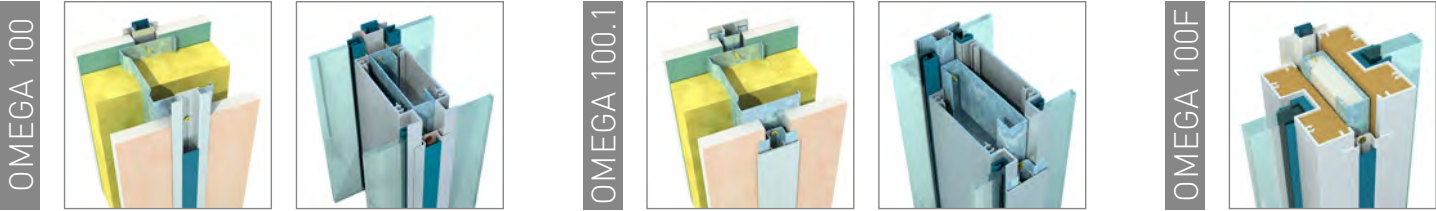




InLIK0® technical parameters

	Modulation					Vertical connection			Profile colour		System technical possibilities							Fire protection			Sound insulation rw (db)						
	Solid module	Double glazed module	Single glazed module - centered	Single glazed module - sides	Combination: solid part x glazed	Covering PVC strip in connection	Covering Aluminum strip in connection	Connecting self-adhesive 3M tape	Natural ELOX surface	RAL powder-coated surface	Dilatation in both directions	Choice of width - solid module	Choice of width - glazed module	Standard width of the module	Standard height of the module	Maximum height of the module	Width of visible connection - solid mod.	Width of connection - glazed module	Partition thickness	Solid module	Glazed module	Door leaf	Sound insulation - Solid module	Sound insulation - Glazed module	Sound insulation - Aluminum frame door	Sound insulation - Wooden door	Sound insulation - GlassDesign door
Omega 100	●	●	●	●	●	●	○	○	●	●	●	●	●	1200	3000	8000	32	46/80	100	○	○	○	47-49	39-45	22-37	21-35	20-34
Omega 100F	●	○	●	○	●	●	○	○	○	●	●	●	●	900/1200	3000	3000	43	80	100	EI/EW 60	EI45/EW 60	EI/EW 30	○	○	○	○	○
Omega 100.1	●	●	●	●	●	○	●	○	●	●	●	●	●	1200	3000	8000	37	37	100	○	○	○	47-49	39-45	22-37	21-35	20-34

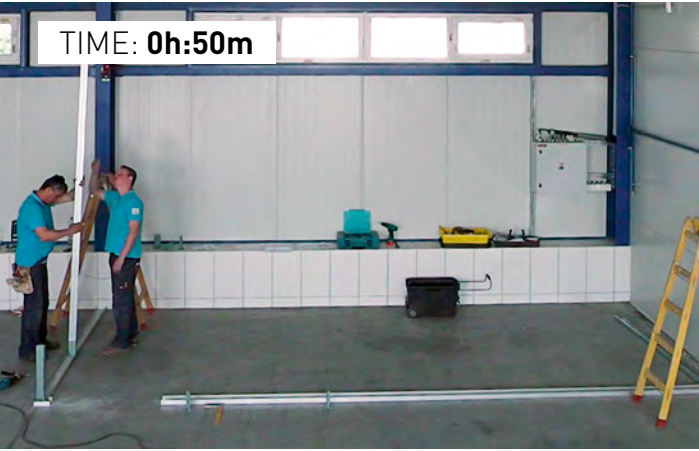
○ System does not allow      ● System allowed



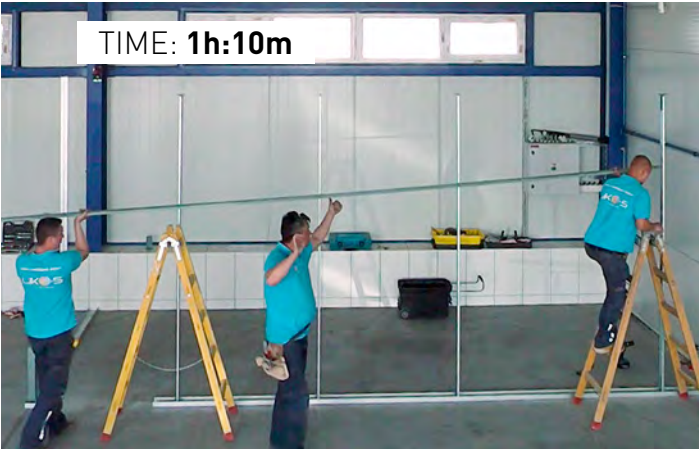
Types of wall modules



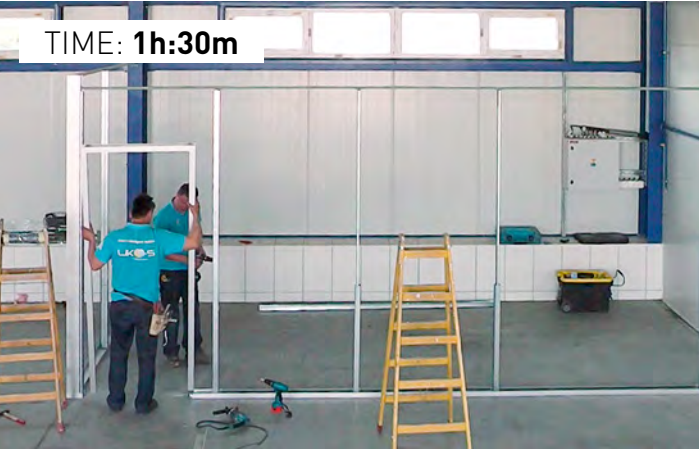
Assembly of inLIK0® inhall unit



Setting up perimeter structure



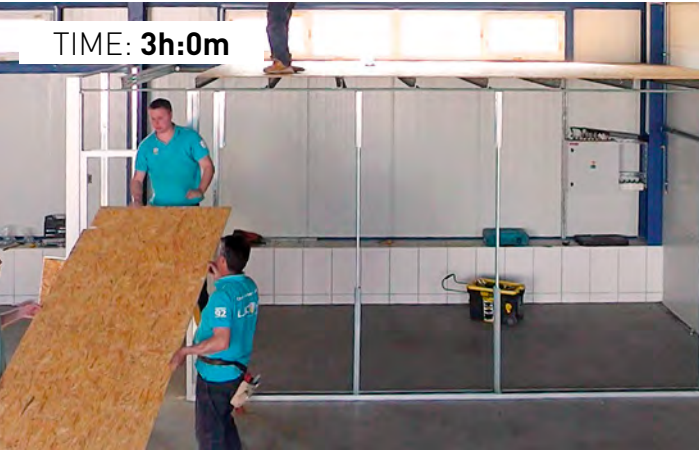
Installation of supporting frame



Doorframe assembly



Ceiling structure assembly



Roofing installation



Installation of solid panels



Installation of glazed panels



Finished inLIK0® inhall unit





---

LIKO-S, India Pvt. Ltd., NO.303, MES RING ROAD, JALAHALLI, BANGALORE, 560013, KARNATAKA, INDIA  
tel.: +91 73386 04001, e-mail: [info@liko-s.in](mailto:info@liko-s.in)

**[www.liko-s.in](http://www.liko-s.in)**

---

Want to be our **Local Partner**? Don't hesitate to ask!