

# MOBILE WALLS





## WE DEFINE QUALITY AS A BENEFIT FOR THE CUSTOMER

We have been manufacturing and installing glass partition walls, **moveable walls** and acoustic solutions since 1992. Through our own research and contact **with our customers** around the world we are constantly improving our products **and developing new solutions**.

Since the beginning of our company history, we have been working on how walls and partitions can help create a better working environment. Given the growing pace of change in business today, **a flexible workplace** brings significant benefits to every company. We believe that space should simply adapt to the needs of users – not the other way around.







**LIKO-SPACE®**

Fast, easy and the most efficient  
use of any space



# LIKO-SPACE®



system  
of roof rails



37-54 dB

## LIKO-Space® | Your flexible space

One, two or maybe three rooms. Constructing and unfolding the sliding wall can be handled quickly and effortlessly by one person in a few minutes. The ideal solution for any space – office, hotel, gym, community centre, shopping areas...

A large selection of surfaces – full-filled LTD, veneer, wallpaper or fabric. Solid and glass panelled sliding walls. A wide assortment of suitable rail systems. Wall parking system tailored to the room and the layout possibilities.

## LIKO-Space+® | An even simpler system

Save time and customize your work environment as you want.

With the vacuum system, the effective division of work space is now even easier. Set up the panels with the push of a button. To release them, simply suck out the air with a few strokes of the special pump.





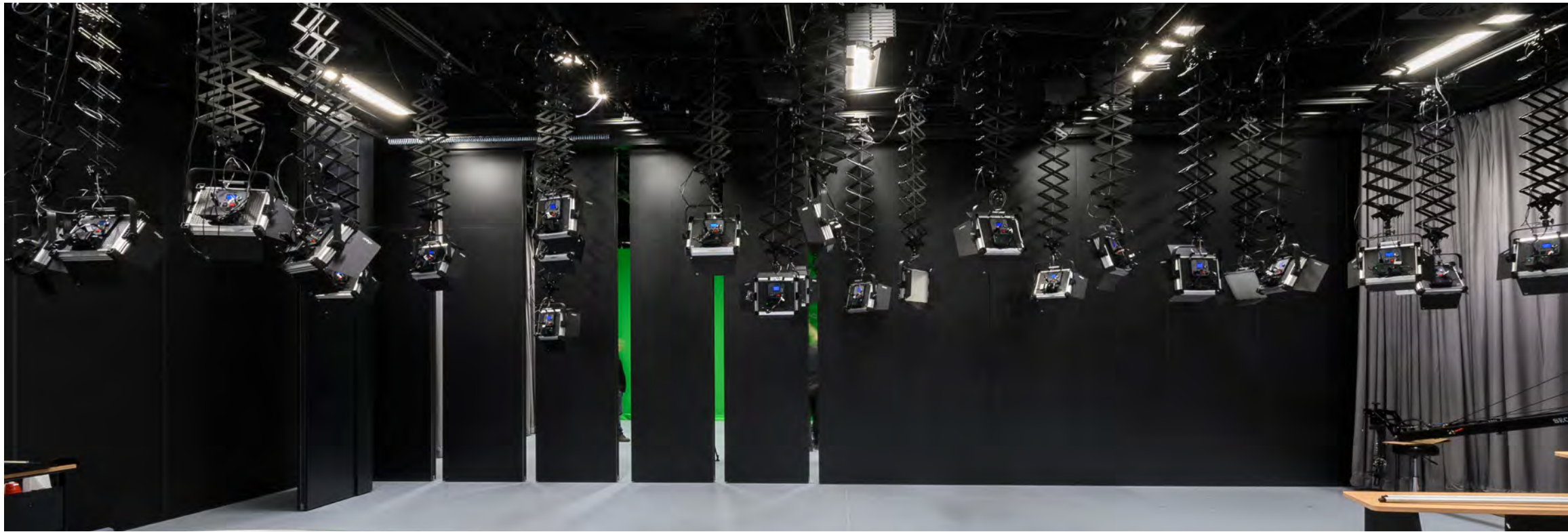
Easily divide or connect rooms  
anywhere, any time you need

Open a hall or private lounge  
in minutes

- ◀ Concealed hinges in the door module
- ▶ Combination of solid, glazed and door panels







- ◀ Hang the panels on the rail for easy handling
- ▶ Simple module parking thanks to the rail system



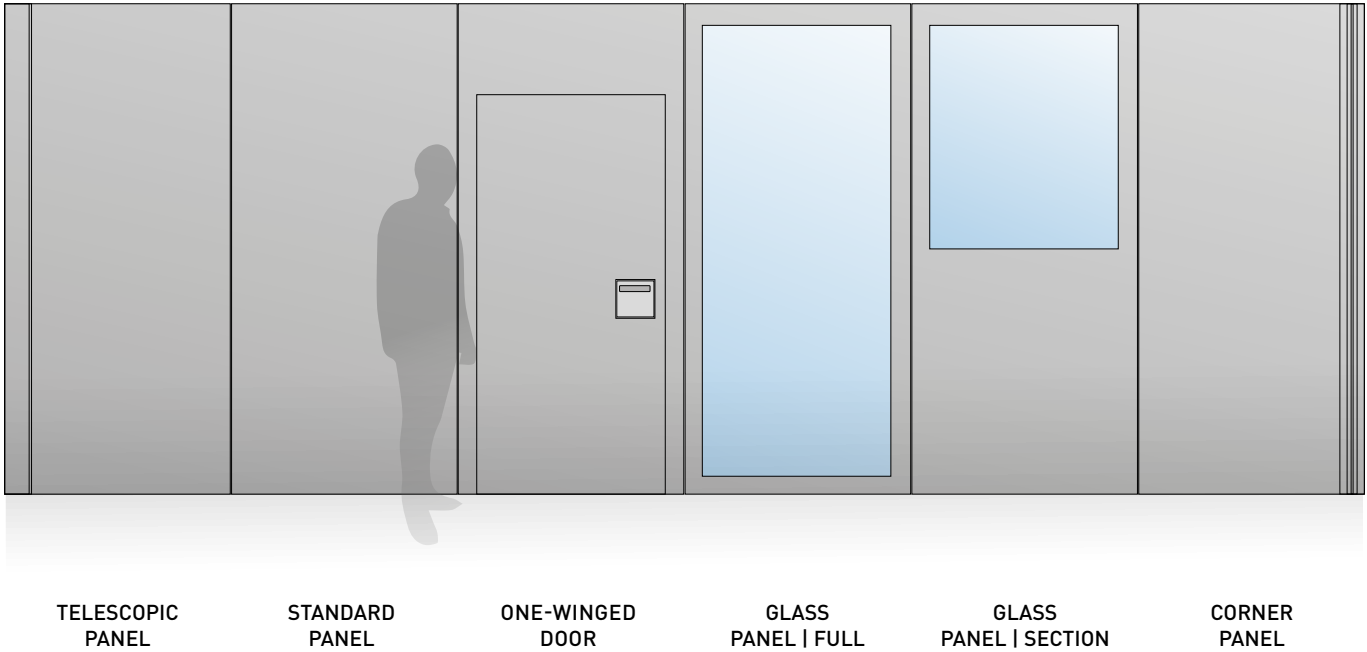
◀ Door module handle



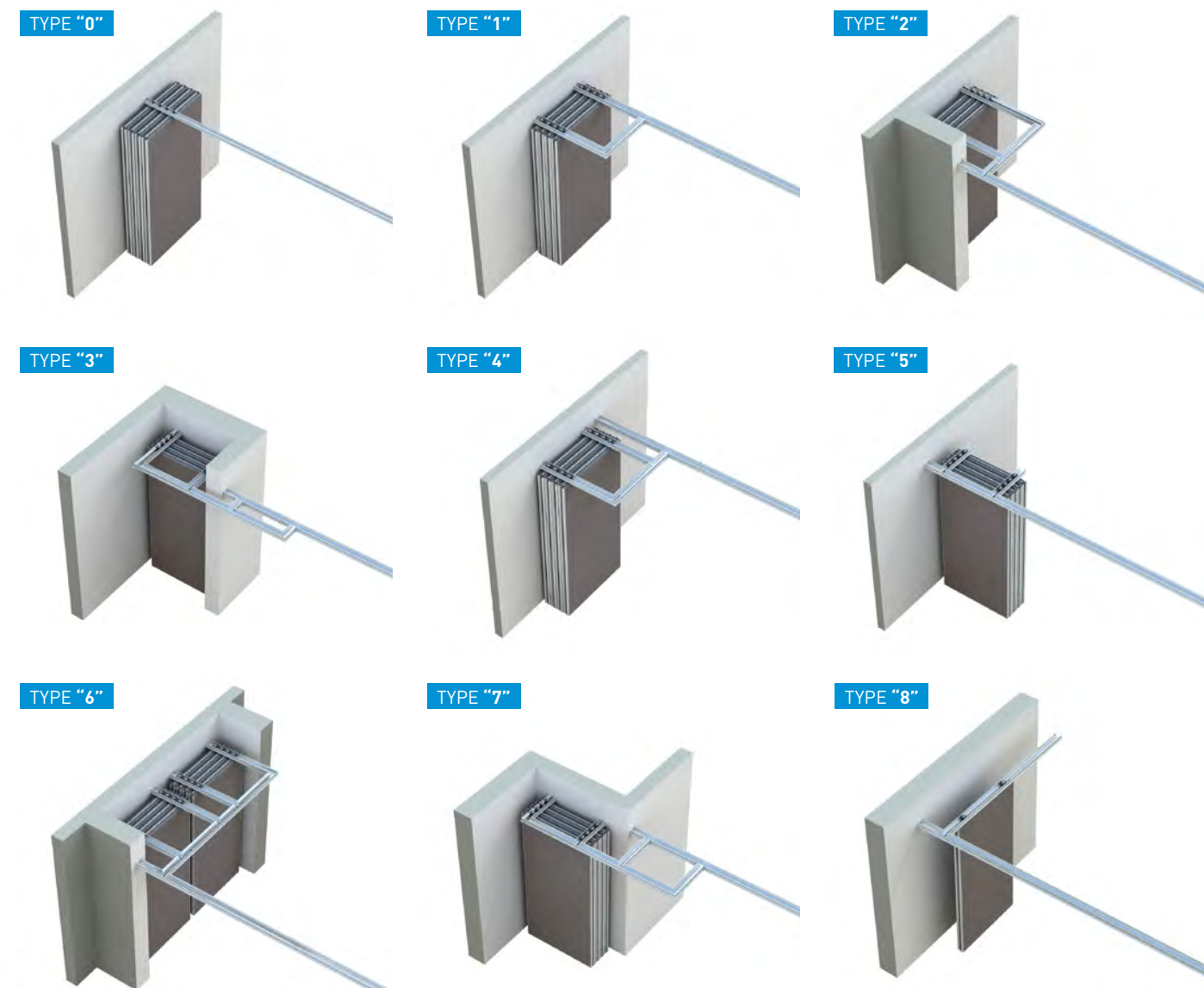




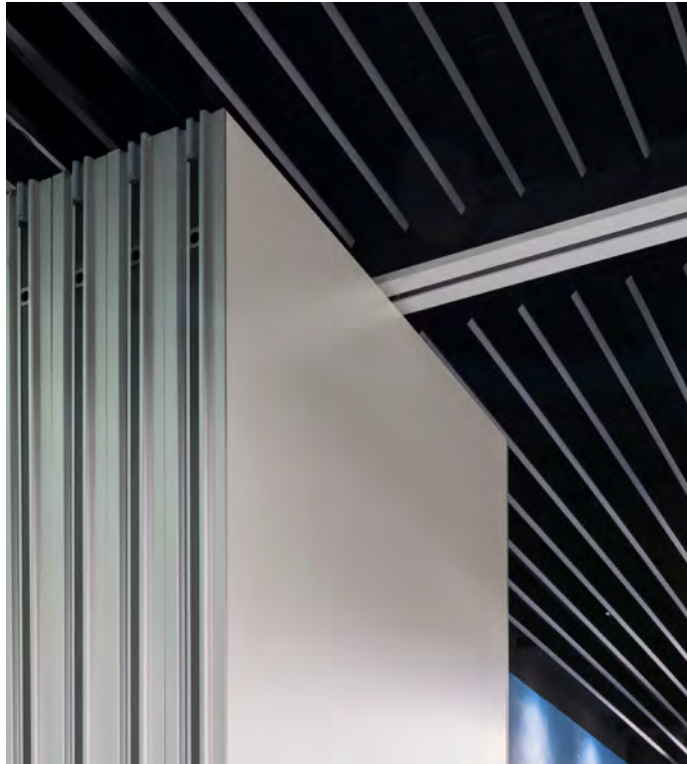
### Types of panels used




### Types of parking



- ▶ Button and pump control | LIKO-Space+
- ▶ Manual handle control | LIKO-Space







# VACUWALL®

The only mobile wall in the world which gives  
your space unlimited variability.





VACUWALL® | Unlimited variability

The only fully mobile wall. You can install it anywhere. To the extent and as often as you want or need it.

VACUWALL® is the only mobile wall for spaces with no loading of the ceiling structure. Thanks to the locking mechanism and low weight, it does not impose any requirements on the surrounding structural elements. Simply decide which room you want to install your VACUWALL® in, measure its height and length and get started.

The unique vacuum system ensures that installation is a question of just a few minutes. It saves you time and money during assembly and rebuilding because you can simply do it all yourself.

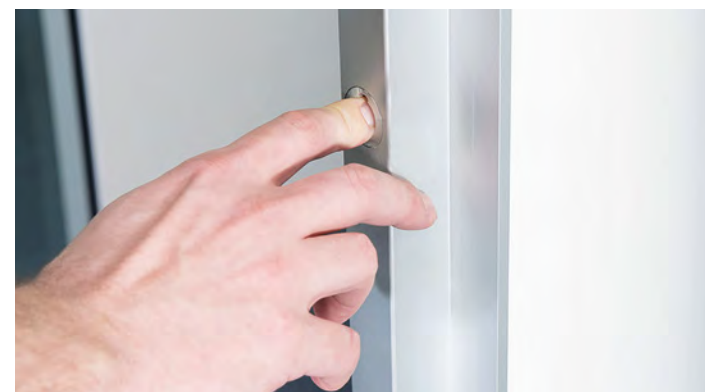
It can be used in combination with other LIKO-S partitions to extend the application of these systems.





- ◀ Ergonomic panel manipulator
- ▶ The wall is fixed into place by pressing a button
- ▶ Fixed panel
- ▶ Panel release pump
- ▶ Loose panel

Vacuwall® can be placed  
in a new building as well  
as in existing interior  
spaces ▶





## LIKO-S: INNOVATIVE LEADERS

The spirit of innovation drives us forward. We constantly **invent** and **innovate** – we are among the top European manufacturers of interior partitions – **glass, mobile and interactive**. The design of the partitions complies with the most demanding requirements for aesthetics, practicality and acoustics.



### GLASS PARTITION WALLS

Frame and frameless partitions meeting **the highest demands** of design and acoustics.



### SMART-I-WALL®

High resolution, unique sound and touch screen right in the wall.



### LIKO-GLASS

We can insert graphics, textiles, metal... **anything narrower than 2 mm.**



### ACOUSTIC SOLUTIONS

SilentPET® or acoustic booths will immerse you in silence and **tunes in the acoustics of the space.**



### Headquarters:

LIKO-S, a.s.  
U Splavu 1419  
684 01 Slavkov u Brna  
Czech Republic

+420 5 44 22 11 11 | [info@liko-s.com](mailto:info@liko-s.com)

[www.liko-partitions.com](http://www.liko-partitions.com)

Become one of our fans and be part of the story...



FACEBOOK



YOUTUBE



LINKEDIN