



OMEGA SYSTEM

MODULAR FRAME PARTITION

An adjustable interior partition system **allowing the combination of solid and glazed modules.**

The walls have an internal hidden structure of thin-walled profiles and the aluminium profiles connecting individual modules are visible.

"Prefabricating modules from our production ensures that assembly is fast and precise."

Jan Musil | Director of the Interiors Division and Deputy Chairman of the Board of Directors



BASIC INFORMATION:

Use:	Non-bearing interior partition walls
Modules:	glazed/solid
Module connection:	aluminium profile anchored to the hidden supporting structure
Internal construction:	thin-walled sheet metal profiles, galvanized
Visible profiles:	liner alloy with surface powder coating/anodized

TECHNICAL SPECIFICATIONS

AIRBORNE SOUND INSULATION R_w :

Glazed module:	Up to 45 dB
Full module:	up to 49 dB
Door leaf:	All-glass 32 dB Wooden 27, 32, 35, 37 dB Aluminium 27, 32, 37 dB GlassDesign 27, 32, 37 dB

STANDARD DIMENSIONS OF THE MODULE:

Thickness:	100 mm
Visible profile widths:	floor 40 mm full wall 30 mm ceiling 55 mm posts 37 mm
Width:	1,200 mm (can be adjusted as needed)
Height:	3,000 mm (max. 4 000 mm)

MATERIAL SOLUTIONS:

Full module:	SDK, farmacell, laminate, veneer, varnish
Acoustic insulation:	thick. 40 mm - 42 dB thick. 60 mm - 47 dB VIP - 49 dB (CW 50 + 4 x SDK 12.5 mm)
Glass module:	ESG 5 mm, ESG 6 mm, 33.1
Glass treatment:	LIKO-Glass, digital blinds

STANDARD DOOR DIMENSIONS:

Clearance (passage):	800 x 2,100 mm
Door frame P03:	940 x 2,155 mm
Door leaf in P03:	872 x 2,113 mm

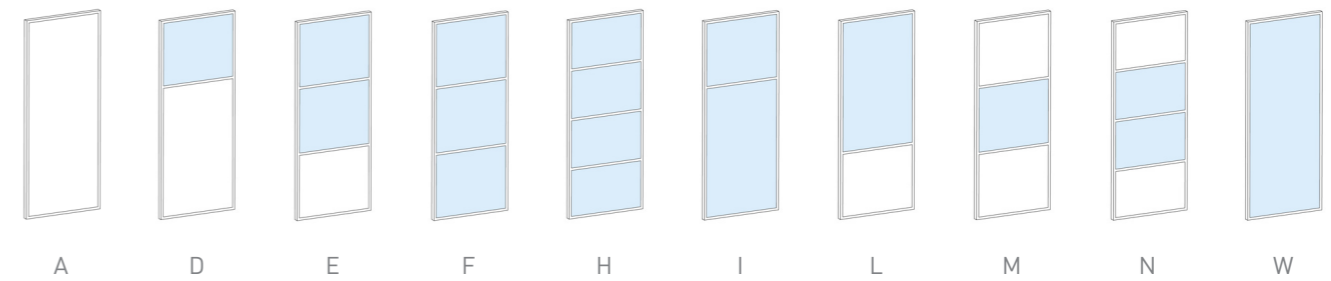
DOOR:

Door leaf types:	Aluminium GDD All-glass Wood
Door frame types:	wooden, aluminium
Standard hinges:	Just 3D, Just 3D Glass, hidden 3D

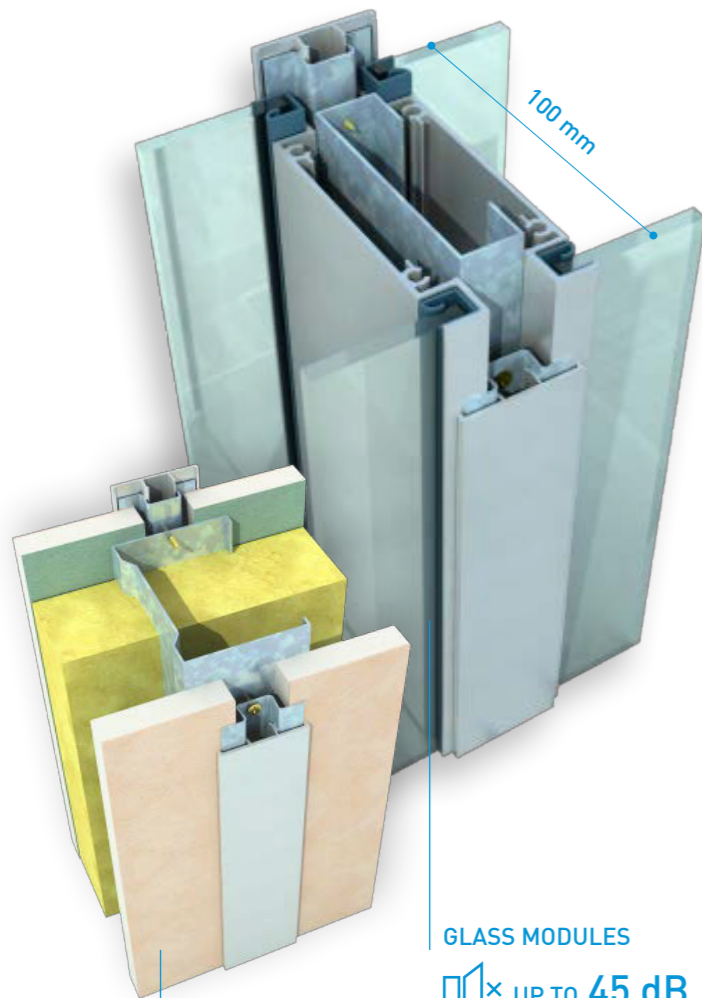
ANCHORING:

Concrete floor:	dowel pins 6 x 35
Double/wooden floor:	TN 3.5 x 35, FN 4.2 x 45
Lining from SDK:	FN 4.2 x 45, Turbo dowel
Concrete/masonry lining:	dowel pins 6 x 35
Ceiling full SDK/cassette:	TN 3.5 x 35, FN 4.2 x 45
Concrete/ceramic ceiling:	dowel pins 6 x 35

WALL MODULE TYPES



DOOR MODULE TYPES



GLASS MODULES

UP TO 45 dB

FULL MODULES

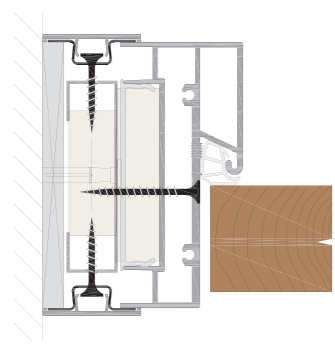
UP TO 49 dB

OMEGA SYSTEM

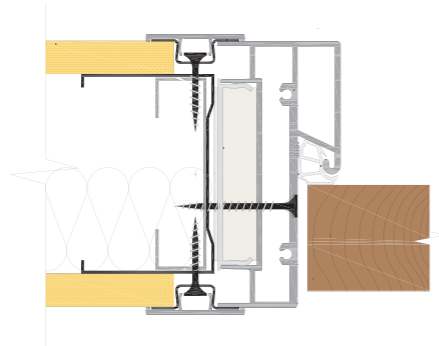
MODULAR FRAME PARTITION

Glazed or full, horizontal or vertical. You can combine the modules at your discretion and easily replace them afterwards.

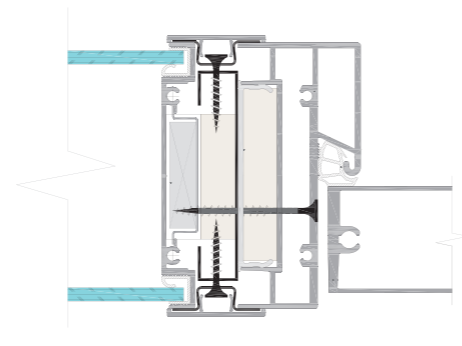
DOOR FRAME DETAILS



termination at the wall | door frame P03

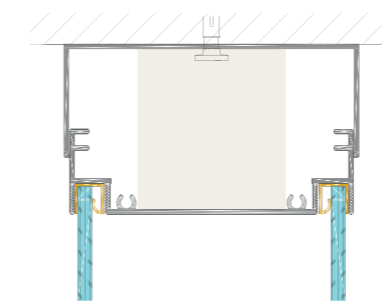


full module connection | door frame P03

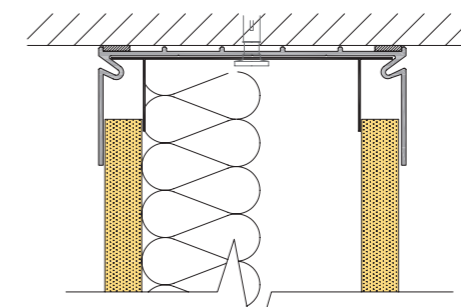


glass module connection | door frame P03

SYSTEM DETAILS

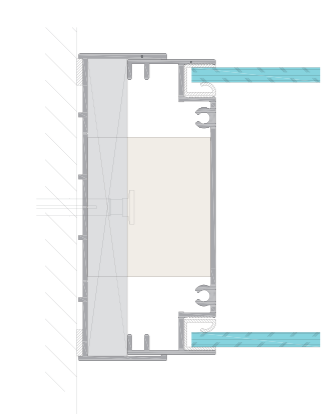


Termination at the ceiling | glazed module

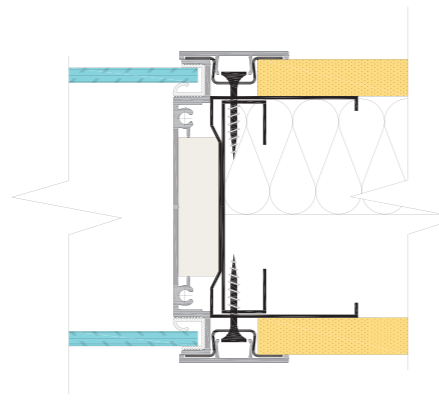


Termination at the ceiling | full module

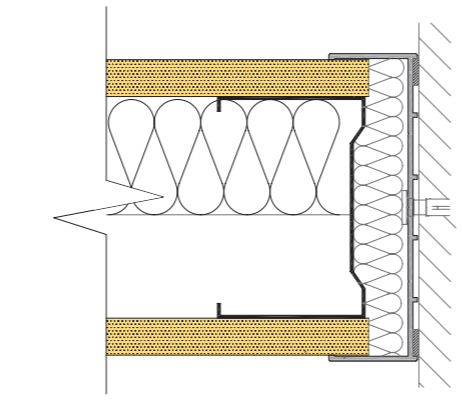
SYSTEM DETAILS



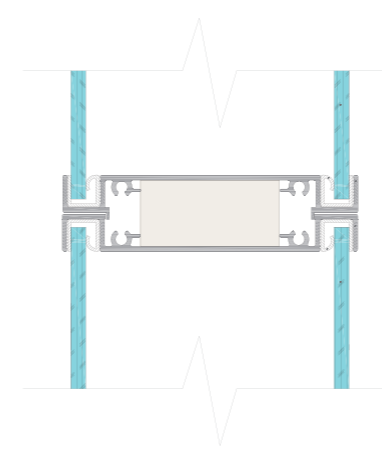
Termination at the wall | **glazed** module



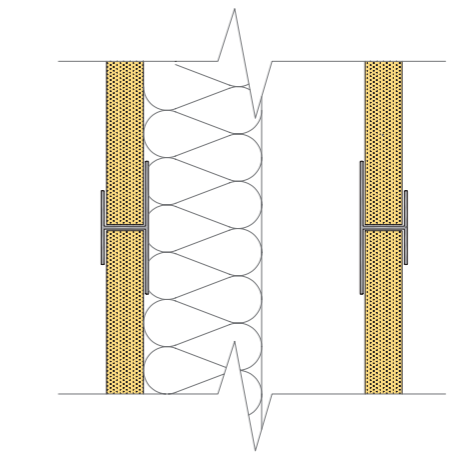
Horizontal section connection of the **full part** to a **glazed part**



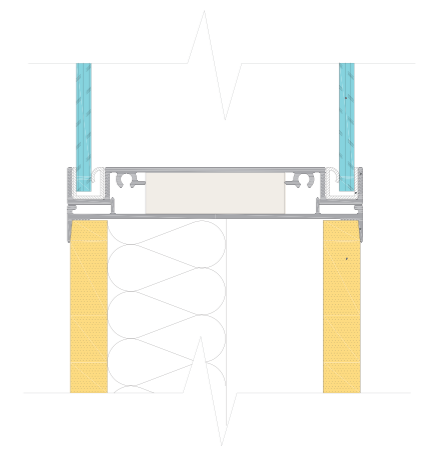
Termination at the wall | **full** module



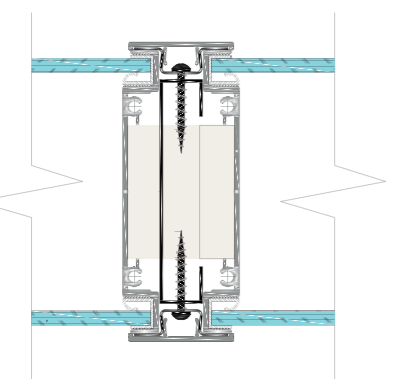
Vertical **connection** of **glazed** modules



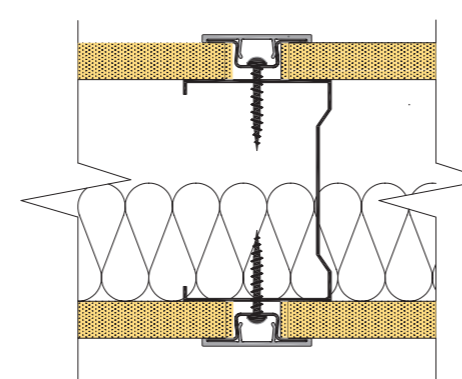
Vertical **connection** of **full** modules



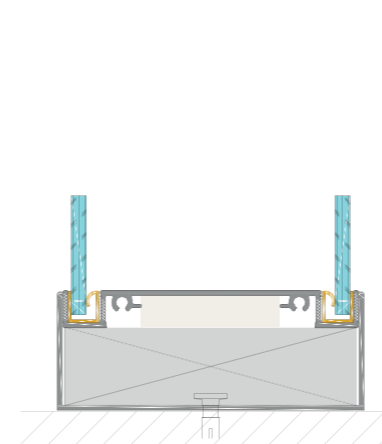
Horizontal connection of the **full part** to a **glazed part**



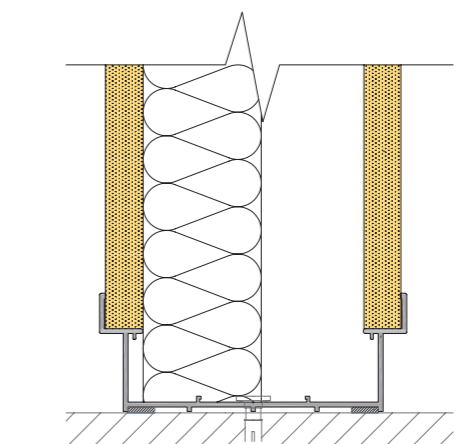
Horizontal section connection of **glazed parts**



Horizontal section connection of **full parts**



Termination at the floor | **glazed** module



Termination at the floor | **full** module



Headquarters:

LIKO-S, a.s.
U Splavu 1419
684 01 Slavkov u Brna
Czech Republic

+420 5 44 22 11 11 | info@liko-s.com

www.liko-s.com

Become one of our fans and be part of the story...



FACEBOOK



YOUTUBE



LINKEDIN